

LIBRARIES & LEARNING COMMONS

Academic Success Center | Center for Teaching and Learning
Institutional Review Board | Law Library | Wilson Library



Greetings from the
Dean of Libraries and Learning

Vinaya Tripuraneni
vtripuraneni@laverne.edu

Welcome to the first Libraries and Learning Commons newsletter!

What is a Learning Commons, you ask? It is not a new concept in higher education and is referred to by other titles such as information commons, academic commons, teaching+learning commons, technology commons, etc.

It is a central facility, usually a library, with areas for group and individual study, instructional and consultation rooms, computer pools, multi-media labs, makerspaces providing collaborative services such as tutoring, writing, library research, instructional and research support for faculty, technology and media support services for both students and faculty, etc.

It is essentially a one stop shop for learning, research teaching and academic technology support. What is sometimes referred to as a “continuum of service”. Over the summer, we developed various collaborative resources and services such as a [faculty resource guide](#), a student [portal](#), and supported [technology access](#) to faculty and students.

Please stay tuned as the LLC continues to develop teaching, learning and research resources and services to support the university community! Please stay tuned as the LLC continues to develop teaching, learning and research resources and services!



Looking for information about this year's elections, how to vote safely or how to register?

Visit our [Voter's Guide](#) for more information.



Wilson Library Updates

While the library building is closed to the public, the library is still checking out books and requesting books and articles from other libraries.

- [How to request a book from the Wilson Library](#)
- [How to request a book or article from another library](#)

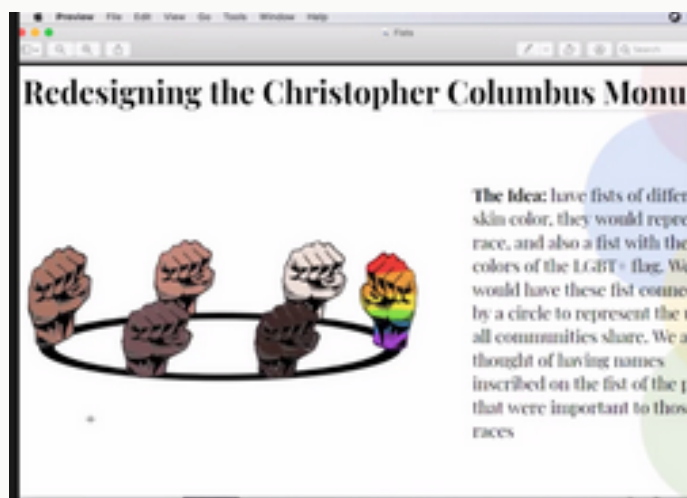
Books may be returned to the library via the book drops or mailed to the Wilson Library.

Technology may be returned to Campus Safety or mailed to the Wilson Library.

Makerspace

The Library Makerspace is excited to provide virtual makerspace services to the La Verne community. You can send us a design and we can print and mail to you.

We are also piloting with faculty from Arts and Science, such as: Professor Chuck Feesago and Prof.essor Walpa D'Mark on 3D design lab; Dr. Russel Muir from Athletic Training to 3D design learning objects for students to learn finger manipulation; Professor Seta Whitby on Virtual Robotic Lab. Moreover, we are working with Professor Dion Johnson and Professor John Calavitta on 3D reconstruction of 2D design of student designed monuments for their writing on diversity, inclusivity and equality.



Institutional Review Board

The Institutional Review Board (IRB), is responsible for reviewing research designs (protocols) involving human subjects. Visit <https://laverne.edu/irb/> for information about how to prepare or submit your application,



Academic Technology Support

Libraries and Learning Commons is providing technical troubleshooting, individual consultation, orientations and workshops to faculty, students, and staff.

Academic Technology Support provides assistance with the following:

- Webex and Zoom
- Qualtrics
- Blackboard
- Productivity Tools
- Creative Tools
- [Faculty Technology Borrowing](#)
- [Student Technology Borrowing](#)
- and [much more](#)

The Academic Technology Support desk is available Sunday-Saturday 8a-8p.

- [Via Zoom](#)
- by email:
academictchnology@laverne.edu

CASE Day

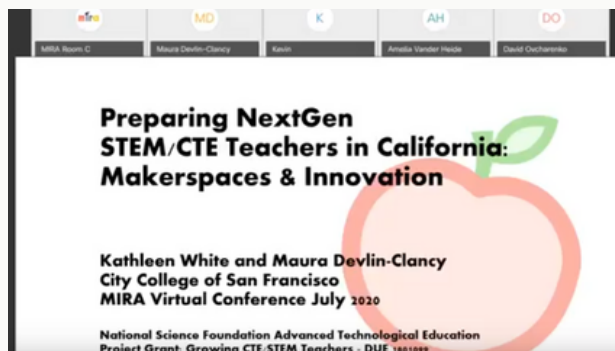
Due to the pandemic, the Wilson Library was not able to hold its Spring events on campus. The library looked for ways to host the events virtually.

The Wilson Library hosted Faculty Book Day, Faculty Research, Student Research/Projects, and the Mini Maker Fair via Mozilla Hubs, a VR platform, and via the library blog.

Visit the [VR rooms](#) to see faculty and student projects and publications.



MIRA



Over the summer the Wilson Library organized its 3rd Annual Makerspace for Innovation and Research in Academics (MIRA) Conference.

Due to the pandemic the library held the conference virtually. MIRA drew in more than 300 participants from throughout the United States, Canada, Mexico and the United Kingdom, to share their expertise with makerspaces and to share their current projects.

Visit the [MIRA website](#) to see past presentations or for more information.

Law Library Resources

The law library building is currently closed but the Law Library is still offering various resources and virtual services.

The Law Library reference librarian is available for research consultations either by email at lawlibrary@laverne.edu or by filling out the [Ask a Librarian form](#).

Faculty and students may also [request books](#) (excluding 2-hour Course Reserves, Reference materials and Library Use Only materials) from the Law Library for pick up.

The University of La Verne College of Law offers an extracurricular [certificate program](#) in legal research for law students.





Archives & Special Collections

Archives and Special Collections is still open to the university community and members of the public. For an overview of our services, which are available remotely, please visit <https://laverne.libguides.com/archives>.

Many one-of-a-kind historical documents from the history of the University of La Verne are available online.

Head to <https://laverne.libguides.com/digital-collections> for samples from our collections. Finally, the archive is also excited to announce a virtual tour to familiarize researchers with our mission and how we can help you. Please watch this video at <https://vimeo.com/463151733>.

"Overall, I want to thank you for assigning an SLA to my classes. I have a 98% student retention on an online teaching platform. Overall, student grade average is 93%. I correlate this to [my SLA's] overall collaboration and valuable expertise in the subject matter which has enhanced student language learning, production, and participation."

Classroom Support

The ASC launched classroom support via Student Learning Assistants (SLAs) this fall. Currently, 15 courses are supported campus-wide, as well as the Math Emporium and Black Scholars Program. SLAs value this support, stating "The ASC provides the opportunity for students to practice what they learn and build professional capacity while still being at school."

For Fall 2020 SLA support, faculty can submit requests [here](#). In addition, the ASC is offering [online tutoring](#), [academic coaching](#), and a [Student Resource Portal](#) for all ULV students this fall.

Dr. Django Paris

The University of La Verne Office of Diversity, Equity, and Inclusion and Center for Teaching and Learning are excited to Partner with the Claremont Colleges Center for Teaching and Learning to invite you to an interactive talk by Dr. Django Paris. Join us on Oct. 28th from 10:00-11:30 AM Pacific Time for this exciting opportunity. Dr. Paris is renowned for his work regarding culturally sustaining practices and will bring his insight to our classrooms and programs.

Dr. Paris has asked that people bring documents, such as syllabi and initiatives, to the talk so we can work with them via a culturally sustaining lens. To RSVP for this event, please use the link below. The event Zoom link will be provided to those who RSVP on the 28th. <https://forms.gle/566yEDFGyx61Jj8s7>



Get to Know Us

Vinaya Tripuraneni, Dean of Libraries and Learning, vtripuraneni@laverne.edu

Sabrina Mora, Communications Coordinator, smora@laverne.edu

Bil Owen, Data Analyst, wowen@laverne.edu

Wayne Thurston, Learning Commons Manager & Executive Assistant to Dean, wthurston@laverne.edu

Donna Williams, Student Employment Coordinator, dwilliams3@laverne.edu

Academic Success Center

Savannah Garcia, Director, sgarcia5@laverne.edu

Matt Neil, Assistant Director, mneil@laverne.edu

Ebony Williams, Associate Director, ewilliams@laverne.edu

Center for Teaching and Learning

Jeremy Schnieder, Director, jschnieder@laverne.edu

Elizabeth Wellins, Instructional Designer, enelson@laverne.edu

Institutional Review Board

MD Haque, mhaque@laverne.edu

Law Library

Jennifer Argueta, Manager, jargueta@laverne.edu

Bill Ketchum, Reference and Instruction Librarian, wketchum@laverne.edu

David Austin, Circulation Assistant, daustin@laverne.edu

Wilson Library

Karen Beavers, Head of Learning, Research & Engagement, kbeavers@laverne.edu

Jennifer Cady, Head of Collections and Scholarship, jesteron@laverne.edu

Matt Durian, Circulation Supervisor - Night, mdurian@laverne.edu

Norma Durian, Research and Instruction Librarian, ndurian@laverne.edu

Linda Gordon, Research and Instruction Librarian, lgordon@laverne.edu

Ben Jenkins, University Archivist, bjenkins@laverne.edu

Amy Jiang, Head of Emerging Technologies and Digital Initiatives, ajiang@laverne.edu

Cathy Johnson, Research and Instruction Librarian, cjohnson2@laverne.edu

Liberty McCoy, Research and Instruction Librarian, lmccoy@laverne.edu

Daphne McKinney, Research and Instruction Librarian - Evenings, dmckinney@laverne.edu

Ben Mulchin, Circulation Supervisor - Day, bmulchin@laverne.edu

David Ovcharenko, Circulation Supervisor - Weekend, dovcharenko@laverne.edu

Shelly Urbizagastegui, Research and Instruction Librarian, sUrbizagastegui@laverne.edu



Upcoming Events

For full list of events or to register visit, <https://laverne.libcal.com/calendar/events>

CBEST Math Session 3: Estimation, Measurement, and Statistical Principles

October 27 | 6:00pm - 7:30pm

Microsoft Word & PowerPoint: Tips and Tricks October 28 | 2:00pm - 3:30pm

SPSS Basics October 28 | 2:00pm - 3:30pm

CBEST Writing Session 3: Expressive & Expository Writing and Application

October 29 | 6:00pm - 7:30pm

Zoom Breakout Rooms, Polling, etc. November 2 | 6pm-7pm

Circuit Making on Tinkercad November 3 | 2pm-3pm

CBEST Math Session 4: Word Problems November 3 | 6pm-7:30pm

Creating Citations with APA November 4 | 12pm-1pm

Using SPSS for your Study November 4 | 2pm-4pm

Technology Fitness November 5 | 12pm-1pm

What is Diwali November 9 | 12p-12:30p

Microsoft Access November 9 | 12p-1p

The Final Countdown: Senior Thesis November 10 | 12p-1p

The Final Countdown: Senior Thesis November 11 | 5p-6p

CBEST Math Practice Test November 10 | 6p-8p

CBEST Writing Practice Test November 12 | 6p-8p

Literature Review Basics November 17 | 5:30p-6:30p

Creating Citations with APA November 19 | 5:30p-6:30p

Reducing Language Anxiety December 1 | 7p-8p & December 2 | 12p-1p

