

## Greetings from the University Librarian



Vinaya  
Tripuraneni  
vtripuraneni@laverne.edu

Dear Students, Faculty and Staff –

Hard to believe but we are just a few weeks away from wrapping up this historic academic year!

Please remember our dedicated team of librarians is always available to provide research assistance. Don't go at it alone! You can walk-in and get assistance or make an appointment at: [library.laverne.edu/help/ask-a-librarian/subject-librarian/](http://library.laverne.edu/help/ask-a-librarian/subject-librarian/)

Starting May 14, the Library will be open 24 hours for the week before finals and the week of finals. A shout out to our dedicated staff that it makes it all possible: Matt Durian, Sabrina Mora, David Ovcharenko and Ben Mulchin.

And congratulations to our 2017 class! Please remember as alumni you are always welcome back at the Library! For more information on access to the Library as alumni, go to [laverne.libguides.com/alumni](http://laverne.libguides.com/alumni)

## Extended Hours for Finals



WILSON LIBRARY'S  
*Extended Hours*

24/7 EXTENDED HOURS

SUNDAY, MAY 14 — FRIDAY, MAY 26  
12PM — 5PM

COFFEE AND TEA SERVED NIGHTLY AT 11PM  
FOR AN UP-TO-DATE SCHEDULE VISIT, [LIBRARY.LAVERNE.EDU/FINALS-SPRING-2017](http://LIBRARY.LAVERNE.EDU/FINALS-SPRING-2017)

## Student Worker Appreciation

We would not be able to function without the help of our student workers. Thank you!

James Trejo  
Raymond Gonzalez  
Gabi Herrera  
Emily De Leon  
Joyce Ayala  
Alyssa Salazar  
Jon Hall

Chris Ortiz  
Art Gonzalez  
Cesar Trujillo  
Kassey Yepez  
Lauren Vasquez  
Cassidy Aranda  
A.J. Johnson  
Hagop Housbian

Jessica Velasquez  
Eric Felten  
Wariss Abedi  
Krittee Piyarattanapipat  
Lucille Ames  
Ana Salvidar  
Matt Valencia

### Ask Us

Call Us: 909.448.4301  
Text Us: 909.638.1882  
Chat with us  
Tweet with us  
Friend us on Facebook  
Hours

**2<sup>nd</sup> Annual  
Mini Maker Fair  
May 10, 2017**

**11a – 1p | Sneaky Park  
Come on by and see all the exhibits!**

## Librarian's Column

This edition of the Librarian's Column is edited by:



**Liberty McCoy**

**Research and  
Instruction Librarian**  
lmccoy@laverne.edu

*(Liberty studied Art History and received her MLIS in 2010. She likes to stay up on current events and public policy and is currently reading A Colony in a Nation by Chris Hayes.)*

Working with several graduate departments such as Public Administration, Gerontology and Health Administration, I often help students with the research for their thesis and dissertations.

Completing this work sometimes relies on useful statistical information, and the library has several databases that can help students locate, compile and review statistical research. One of the most useful of these databases is Social Explorer, and it has the ability to help students across many disciplines.

Social Explorer contains all of the Census data and the American Community Survey data, as well as additional data such as FBI Crime Report data and County Health Rankings. You can utilize this database to create targeted reports will all of this data.

Or you can create unique data maps, displaying visualizations of statistics like education levels, household wealth and population density. These maps can be downloaded to be utilized in papers or PowerPoint presentations.

### Top Pop Reads

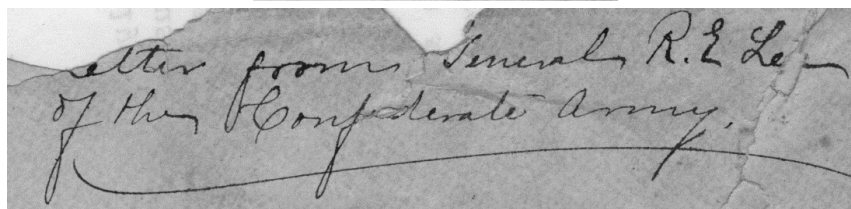
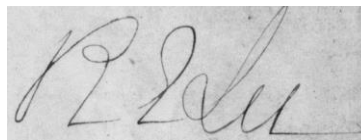
1. Vampires in the Lemon Grove
2. The Valley of Amazement
3. No Man's Nightingale

## Additional Power Outlets

During Spring Break the library installed an ultra-thin power distribution system on the first floor. This system provides additional power outlets for students to charge their electronic devices.



## Archives and Special Collections



Every now and then, an archivist is lucky enough to discover a long-hidden jewel in the archives. This happened at Wilson Library recently, when Dr. Benjamin Jenkins unearthed an unusual letter from the nineteenth century. Recently, the Bixby family, descended from some of the earliest residents of La Verne, donated their family collection to the Archives of Wilson Library.

The Bixbys descended from a number of families who served in the American Revolution and Civil War, and they had saved material that dated back to the eighteenth century! Among their trove was a letter from Robert E. Lee, a general who served the Confederacy during the American Civil War. Although the letter was written in 1866, after the conflict ended, the envelope still identified Lee as "General of the Confederate Army."

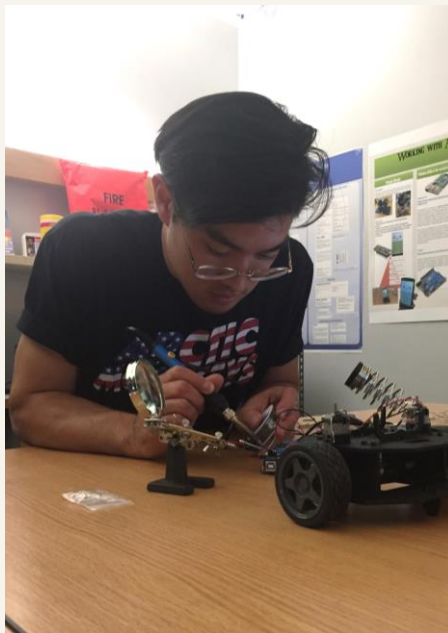
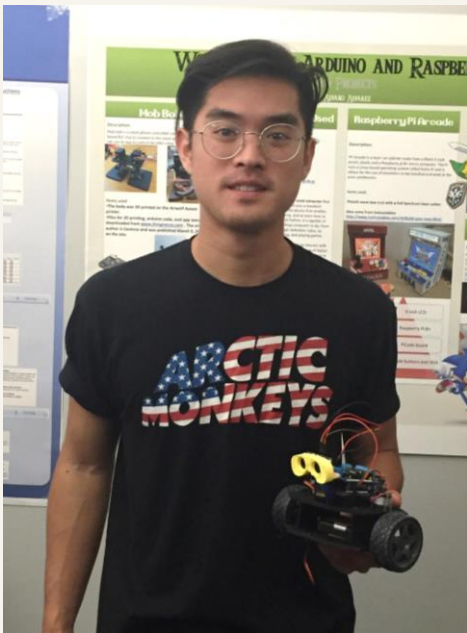
Not many libraries or museums in California can lay claim to such a unique document. Stop by Archives and Special Collections sometime to take a look at it. You may find other treasures hidden there, too.

## What's Going On?

Want to promote your event? Make use of it on the library's digital display! With over a 1,000 visits a day, your event will get the attention it deserves. Email Amy Jiang today at, [ajiang@laverne.edu](mailto:ajiang@laverne.edu).

### Student Employee of the Year – Raymond Gonzalez

Raymond was nominated by the library and was selected for Student Employee of the Year by Human Resources in conjunction with Western Association of Student Employment Administrators (WASEA). He was nominated for his professionalism, campus engagement, quality of work, and contributions to the library. Raymond introduced the Raspberry Pi to the library staff which resulted in the concept of the Digital Display, which is being used in the library to display announcements.



#### Major:

- Computer Science with Music Minor

#### Favorite Genre of music:

- Soul, Funk

#### Hobbies:

- Tinkering and making things
- Composing music

#### Campus involvement:

- President, SAE
- Board Game Club
- Makerspace

#### Career Goal:

- Create a start-up business with a friend

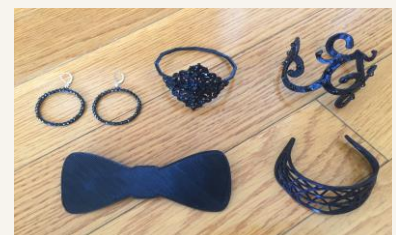
### 3D Printed Jewelry

Melody Vance created jewelry for her and President Lieberman to wear to the Gala, using the library's 3D printer. The jewelry was auctioned off and raised \$700 for scholarships.

“The designs are inspired by President Lieberman and her stunning gown. I wanted to create jewelry to enhance her beauty and bring out the beautiful details on her gown.” – Melody Vance

Right: Melody Vance and President Lieberman.

Far right: 3D printed jewelry



Designed and edited by Sabrina Mora